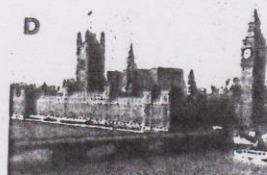
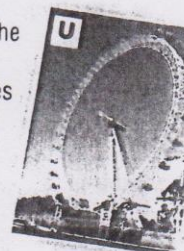



1. Tower Bridge
2. St Paul's Cathedral
3. The Globe Theatre
4. The London Eye
5. City Hall
6. Westminster Abbey
7. Buckingham Palace
8. Trafalgar Square
9. The Tower of London
10. HMS Belfast
11. The Houses of Parliament and Big Ben



[N] At this popular place many important state celebrations and seasonal events are held. In its centre is situated the tall Nelson's Column⁶. There are also many sculptures, four ^{there are} fountains and let's not forget ^{to} the hundreds of pigeons⁹. Along one of its sides, the impressive building of the National Gallery invites you to come inside.



[M] ✓ This symbol of London, where there is a museum now, has two towers, two walkways¹⁵ and a central road that can be lifted when taller ships are passing through.



[A] This church, one of the most famous buildings in London, has the world's second largest cupola. It was designed by Sir Christopher Wren and became the place where many important national events, royal weddings and celebrations take place.



[F] The glass building, designed by Norman Foster, was opened in 2002. Its shape is unusual and reminds³ one of a large egg or helmet. It is home to the Mayor⁴ of London and more than 600 staff members. Inside, there is a spiral walkway⁵, about 500m long, leading up to the top of the building.



[O] Since the 19th century, it has been the residence of the British kings and queens. There are 775 rooms, including 19 state ones, 52 royal and guest bedrooms and 78 bathrooms. In front of this building, the popular ceremony of the Changing the Guards takes place every day at 11:30 am.



[D] This historic castle, founded at the end of the 11th century, has been a royal residence, fortress¹⁰, prison, royal mint¹¹, menagerie¹², museum, and, nowadays, a great tourist attraction. You can admire Norman architecture, learn a lot of history, see the Crown Jewels¹³ and take a photo with the Beefeaters.



[N] These buildings are home to the House of Lords, the House of Commons and the famous Clock Tower with the biggest bell in London (13,760 kg). The clock of the tower is one of the world's most famous clocks. The hour hand is 2.7 m long and the minute hand is 4.58 m long.



In No. 10 you can
look forward to our

I
(a)

M
(b)

1. wheel [wi:l] – kolo, 2. capsule [kæpsju:l] – kabina, 3. remind [ri'maind] – připomínat, 4. Mayor [mee] – primátor, 5. spiral walkway [spaiərel wo:k,wei] – točité schodiště, 6. funeral [fju:nərəl] – pohřeb, 7. splendid [splendid] – nádherný, 8. column [ˈkɒləm] – sloup, 9. pigeon [pidʒin] – holub, 10. fortress [fo:tris] – pevnost, 11. mint [mint] – mincovna, 12. menagerie [mi'nædʒəri] – zvířinec, 13. Crown Jewels [kraun dʒu:əlz] – korunovační klenoty, 14. be at anchor [æŋkə] – kotvit, 15. walkway [wo:k,wei] – spojovací chodba