

Speaking Card 36 Around Town

Language: Giving Directions, Recommending Sights to See.

gate

GIVING DIRECTIONS

Tourist: Excuse me. Can you tell me the way to Charles Bridge?

Teen: Sure. The best way to get there is to go straight down Celetná Street.

Tourist: Okay. The street opposite us?

Teen: Yes. Then you'll get to Old Town Square. It's a big square – you can't miss it.

Tourist: That's where the big clock is, right?

Teen: Yes. Go straight across the square. You'll get to Karlova Street. Follow that street.

Tourist: Okay.

Teen: After Karlova Street take the first right onto Husova Street. Then turn left onto Karlova Street again.

Tourist: And then I'll be at the bridge?

Teen: That's right. When you get to the end of Karlova Street, you'll see the bridge in front of you.

Tourist: Thank you so much for the directions.

Teen: No problem. Enjoy your stay in Prague.

GIVING RECOMMENDATIONS

Tourist: Before I visit the bridge, can you give me some recommendations of other sights to see in Prague?

Teen: Certainly. I'm from Prague. Let me give you some tips.

Tourist: Fantastic. This is my first trip here so I'm not sure where to go.

Teen: Okay. Of course, you have to see Prague Castle. After you cross the bridge you can visit the castle. It's beautiful.

Tourist: That sounds great.

Teen: Also, one of my favourite places in Prague is Vyšehrad. In my opinion, it's a must-see. The view from there is amazing.

Tourist: This is so helpful. Do you have any other recommendations?

Teen: You should check out Náplavka. It's by the river and it's a great place to relax.

Tourist: Thank you so much. I'm glad I met you.

Teen: You're welcome. Have a great day.

HANDY PHRASES

How to Ask for Directions

Can you tell me the way to ...?

How do I get to...?

Is that the street...?

And then I'll be at the bridge / street / river?

How to Give Directions

The best way to get there is to turn right / go straight ahead.

You'll get to the bridge / bank / street.

You can't miss it.

Go straight across the street / square / bridge.

You'll get to Brown Street / the Vltava River / Charles Bridge.

Follow that street / path / avenue.

Take the first / second right / left onto Oxford Street / Wall Street.

Turn left / right onto Karlova street / Fifth Avenue.

When you get to the end of the street / path / road...

You'll see the bridge / castle / bank in front of you.

How to Ask for Recommendations

Can you give me / Do you have any recommendations?

How to Give Recommendations

Let me give you some tips / recommendations.

You have to see the castle / museum / art gallery.

One of my favourite places is the bridge / park / castle.

It's a must-see.

You should check out the park / restaurant / theatre.

Speaking Card 36 Around Town

Language: Giving Directions, Recommending Sights to See.

gate

GIVING DIRECTIONS

Tourist: Excuse me. Can you tell me the way to Charles Bridge?

Teen: Sure. The best way to get there is to go straight down Celetná Street.

Tourist: Okay. The street opposite us?

Teen: Yes. Then you'll get to Old Town Square. It's a big square – you can't miss it.

Tourist: That's where the big clock is, right?

Teen: Yes. Go straight across the square. You'll get to Karlova Street. Follow that street.

Tourist: Okay.

Teen: After Karlova Street take the first right onto Husova Street. Then turn left onto Karlova Street again.

Tourist: And then I'll be at the bridge?

Teen: That's right. When you get to the end of Karlova Street, you'll see the bridge in front of you.

Tourist: Thank you so much for the directions.

Teen: No problem. Enjoy your stay in Prague.

GIVING RECOMMENDATIONS

Tourist: Before I visit the bridge, can you give me some recommendations of other sights to see in Prague?

Teen: Certainly. I'm from Prague. Let me give you some tips.

Tourist: Fantastic. This is my first trip here so I'm not sure where to go.

Teen: Okay. Of course, you have to see Prague Castle. After you cross the bridge you can visit the castle. It's beautiful.

Tourist: That sounds great.

Teen: Also, one of my favourite places in Prague is Vyšehrad. In my opinion, it's a must-see. The view from there is amazing.

Tourist: This is so helpful. Do you have any other recommendations?

Teen: You should check out Náplavka. It's by the river and it's a great place to relax.

Tourist: Thank you so much. I'm glad I met you.

Teen: You're welcome. Have a great day.

HANDY PHRASES

How to Ask for Directions

Can you tell me the way to ...?

How do I get to...?

Is that the street...?

And then I'll be at the bridge / street / river?

How to Give Directions

The best way to get there is to turn right / go straight ahead.

You'll get to the bridge / bank / street.

You can't miss it.

Go straight across the street / square / bridge.

You'll get to Brown Street / the Vltava River / Charles Bridge.

Follow that street / path / avenue.

Take the first / second right / left onto Oxford Street / Wall Street.

Turn left / right onto Karlova street / Fifth Avenue.

When you get to the end of the street / path / road...

You'll see the bridge / castle / bank in front of you.

How to Ask for Recommendations

Can you give me / Do you have any recommendations?

How to Give Recommendations

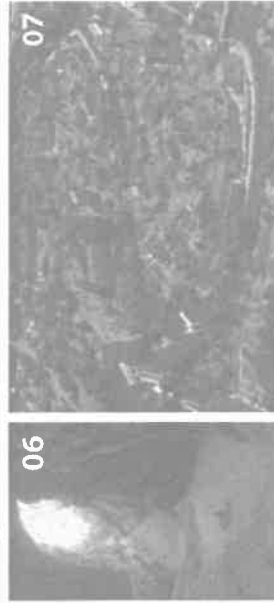
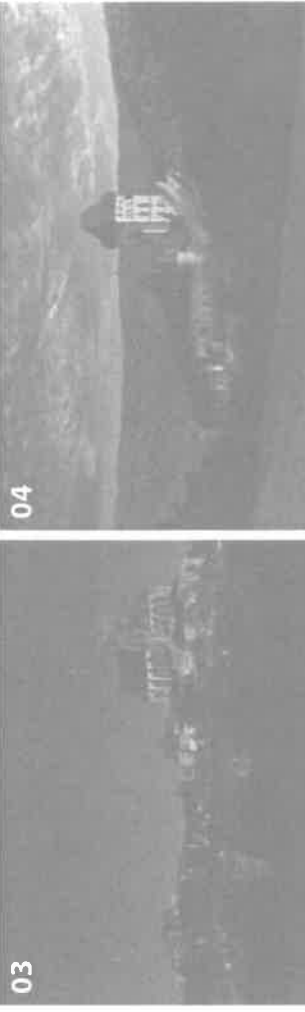
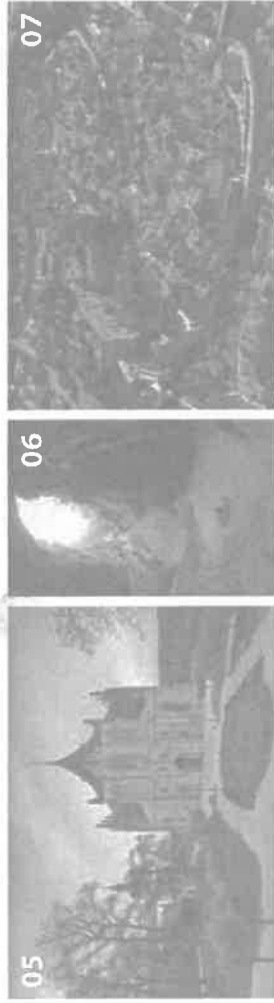
Let me give you some tips / recommendations.

You have to see the castle / museum / art gallery.

One of my favourite places is the bridge / park / castle.

It's a must-see.

You should check out the park / restaurant / theatre.



Task 1

Role-play a dialogue with your partner. Use the map in picture 2. Choose a place to give directions to.

- A** You are at Wenceslas Square. Ask Student B for directions to the place.
- B** Give the first direction.
- A** Ask a question to check.
- B** Reply, then give the next direction.
- A** Thank student B and ask another question to check.
- B** Respond politely and give the next direction.
- A** Thank student B again and say goodbye.
- B** Respond politely and say goodbye.

Task 2

- A** Can you give a tourist directions to the nearest cash machine / pharmacy / post office?
- B** Choose two pictures of famous Czech places. How would you recommend these places to a tourist? What phrases can you use?

Task 1

Role-play a dialogue with your partner. Use the map in picture 2. Choose a place to give directions to.

- A** You are at Wenceslas Square. Ask Student B for directions to the place.
- B** Give the first direction.
- A** Ask a question to check.
- B** Reply, then give the next direction.
- A** Thank student B and ask another question to check.
- B** Respond politely and give the next direction.
- A** Thank student B again and say goodbye.
- B** Respond politely and say goodbye.

Task 2

- A** Can you give a tourist directions to the nearest cash machine / pharmacy / post office?
- B** Choose two pictures of famous Czech places. How would you recommend these places to a tourist? What phrases can you use?